






AI  
SWEDEN

# Tillsammans accelererar vi användningen av AI i Sverige

 [ai.se](https://ai.se)

 [youtube.com/c/aisweden](https://youtube.com/c/aisweden)

 [linkedin.com/company/aisweden/](https://linkedin.com/company/aisweden/)

# AGENDA



AI Sweden – hur vi främjar samarbete inom AI

Praktiska exempel – pågående projekt och lärdomar från andra sektorer

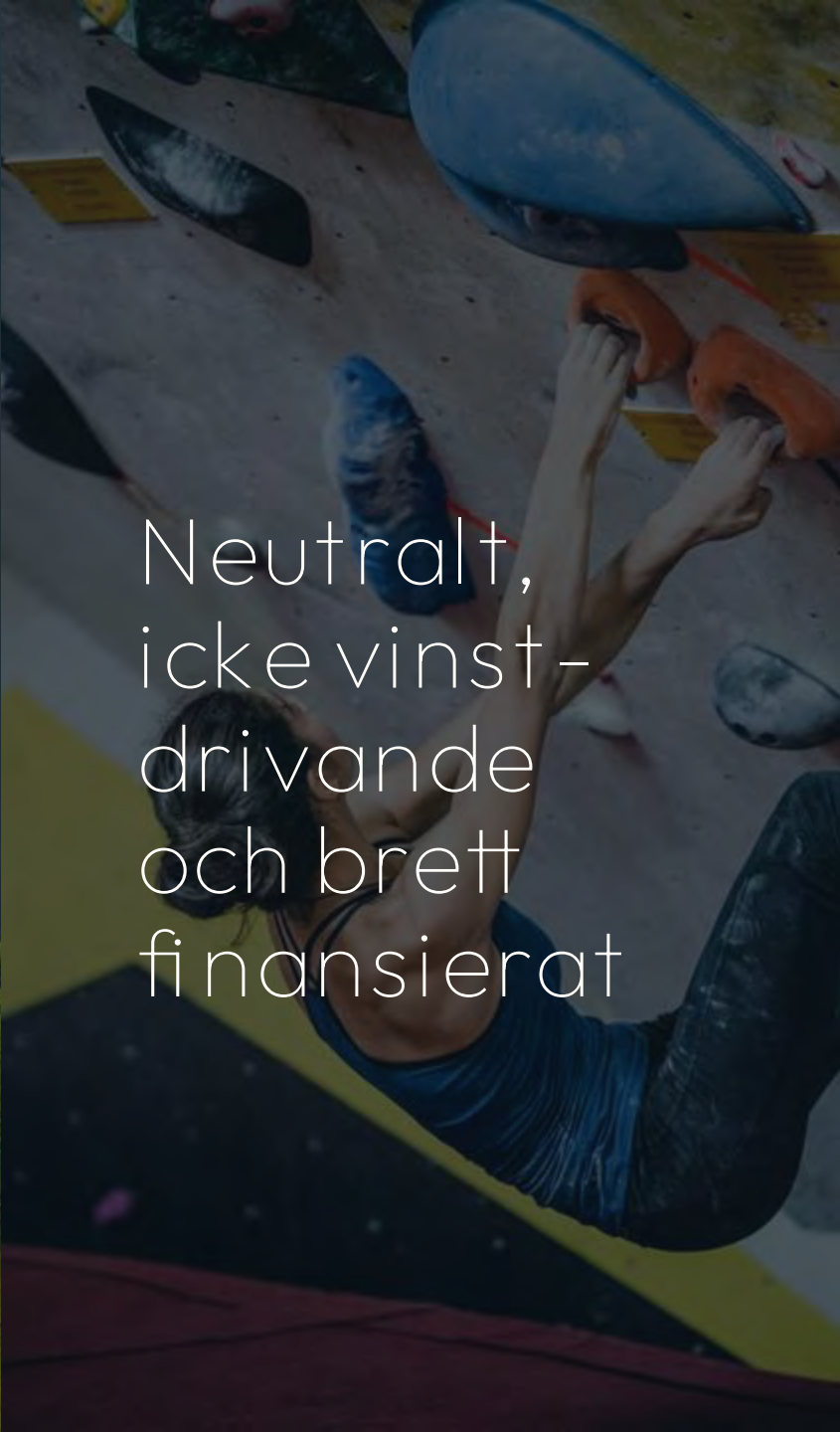
Varför AI i fastigheter?



AI Sweden

An aerial photograph showing a dense green forest on the left and a large, rectangular agricultural field with distinct furrows on the right. The image is overlaid with a semi-transparent dark green filter.

Nationellt  
center för  
tillämpad AI

A photograph of a person climbing a rock wall. The climber is wearing a blue tank top and dark pants, and is reaching up to grasp a blue handhold. The rock wall is light-colored with various colored holds. The image is overlaid with a semi-transparent dark blue filter.

Neutralt,  
icke vinst-  
drivande  
och brett  
finansierat

A photograph of a group of people participating in a zipline activity. They are suspended on a cable and are holding onto a horizontal bar. The background is dark, suggesting a night or low-light setting. The image is overlaid with a semi-transparent dark blue filter.

Samlar  
näringsliv,  
akademi och  
offentlig  
sektor

The logo for AI SWEDEN, featuring the letters 'AI' in a large, bold, yellow font, with the word 'SWEDEN' in a smaller, yellow font directly below it.

AI  
SWEDEN

# Nationellt ansvar, Regional närvaro

Nuvarande konsortium av värdorganisationer



**E**Business

**i**NOVATION  
SKÅNE

● Lindholmen  
● Science Park  
●  
●  
●

**AI@**  
**santa anna**  
Santa Anna IT Research Institute    santa-anna.se

**high  
five**

**Växjö Linnæus  
Science Park** 

**Humantech Foundation**

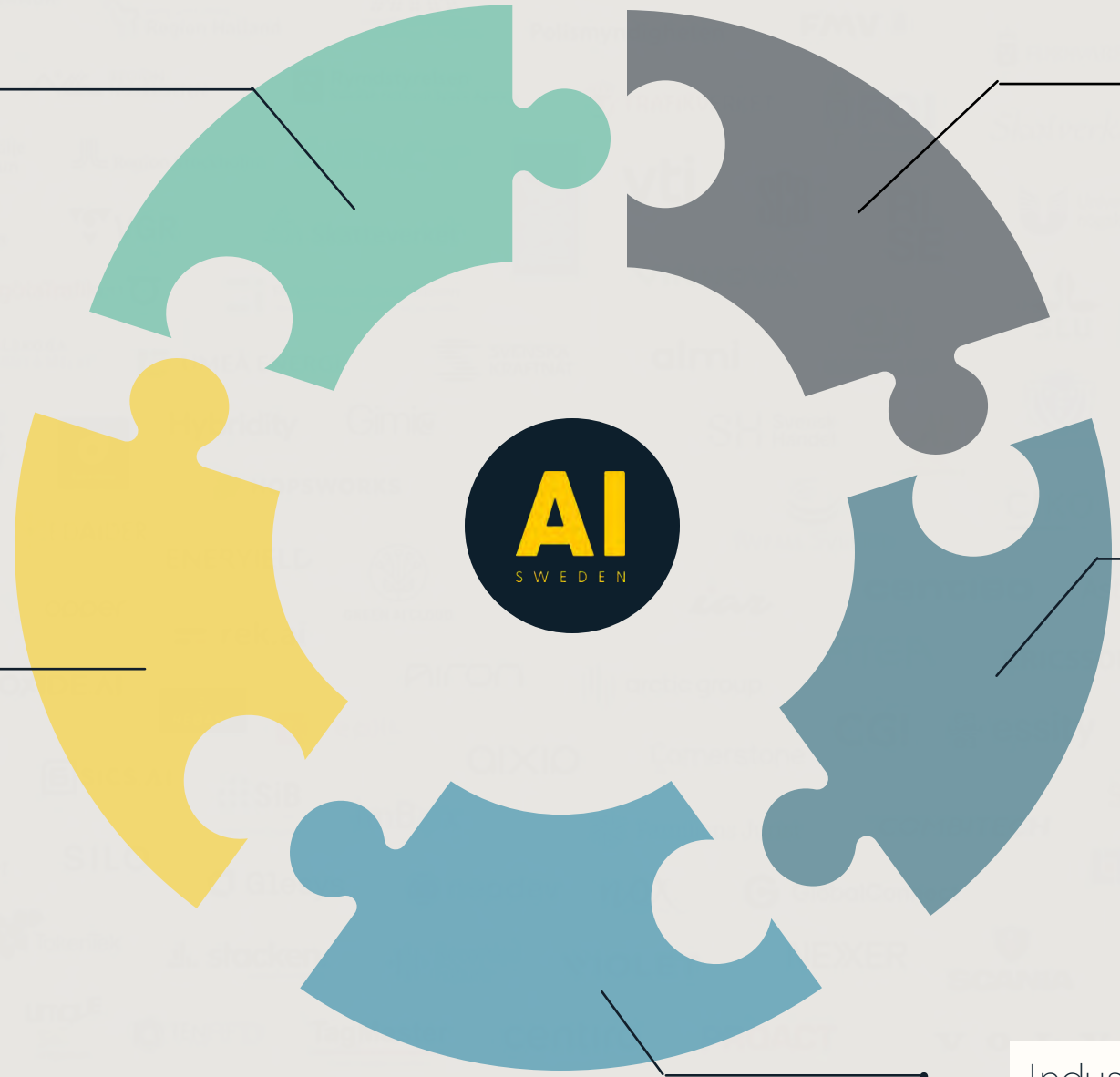
Offentlig sektor

Akademi &  
forskningsinstitut

Startups & SMF

NGO:er, fack- &  
branschorganisationer

Industri & storföretag







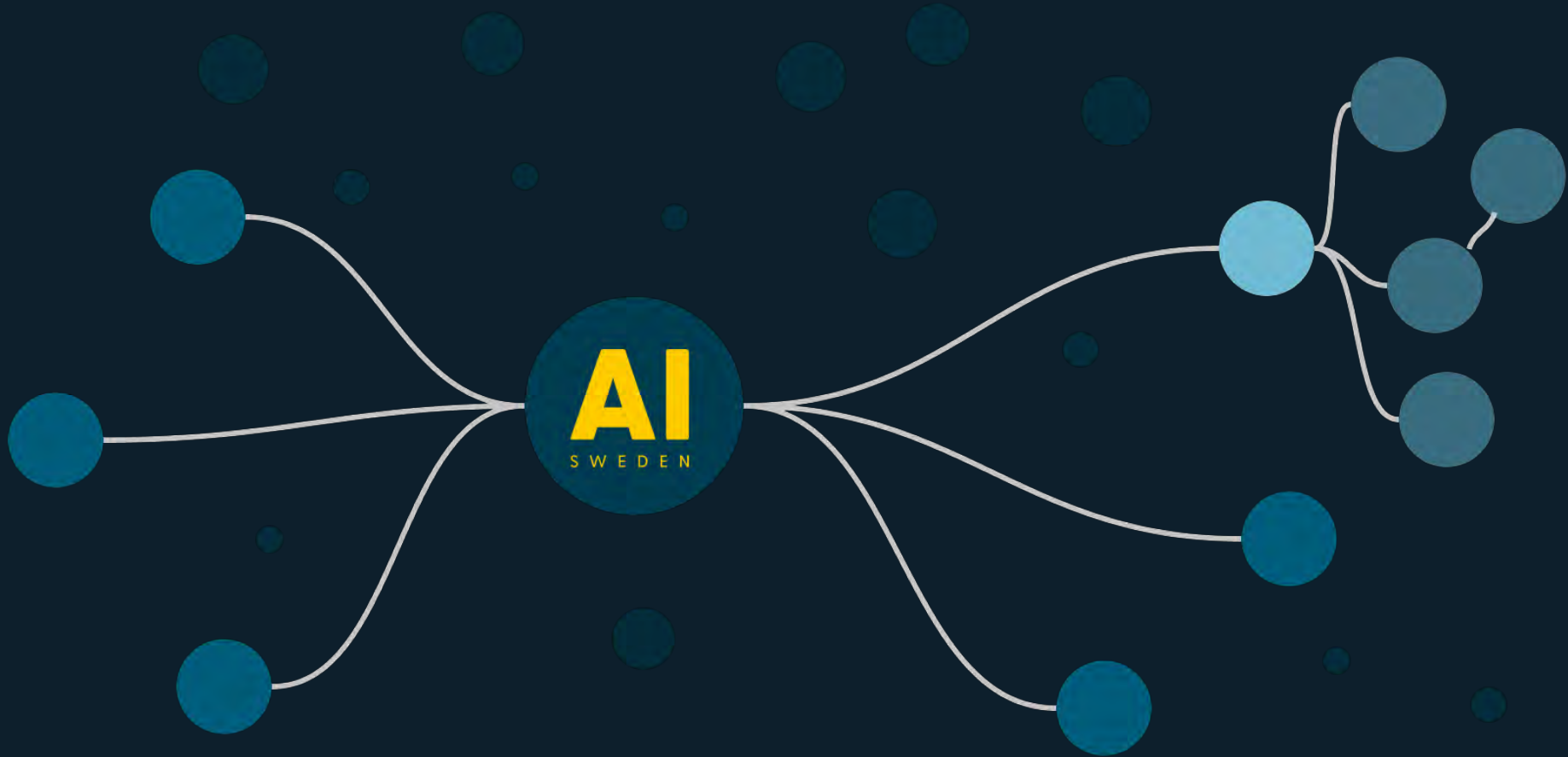
AI Labs



Tillämpning



Ekosystem



Investera tillsammans,  
dela med många

An iceberg floating in the ocean. The tip of the iceberg is above the water line, and the much larger, jagged base is submerged below. The sky is blue with some clouds, and the water is a deep blue. The text is overlaid on the image.

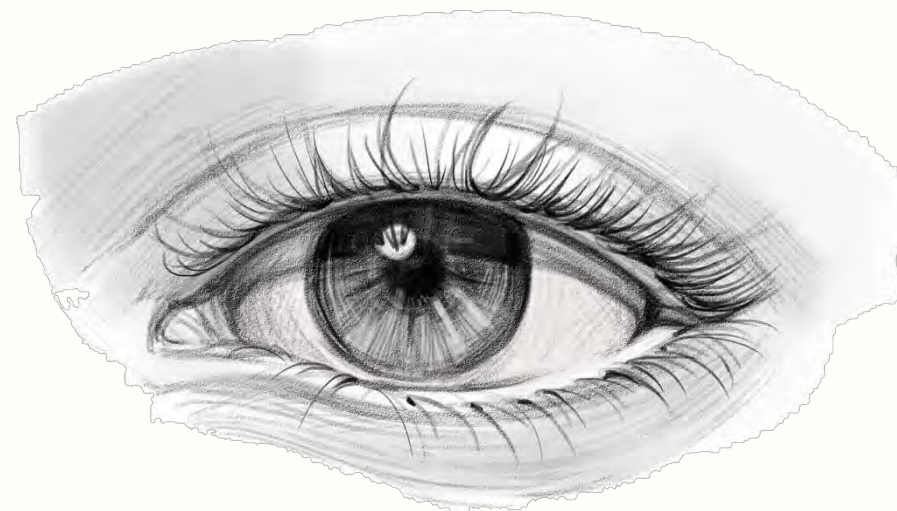
AI-teknik 10%

Data 20%

Organisation 70%

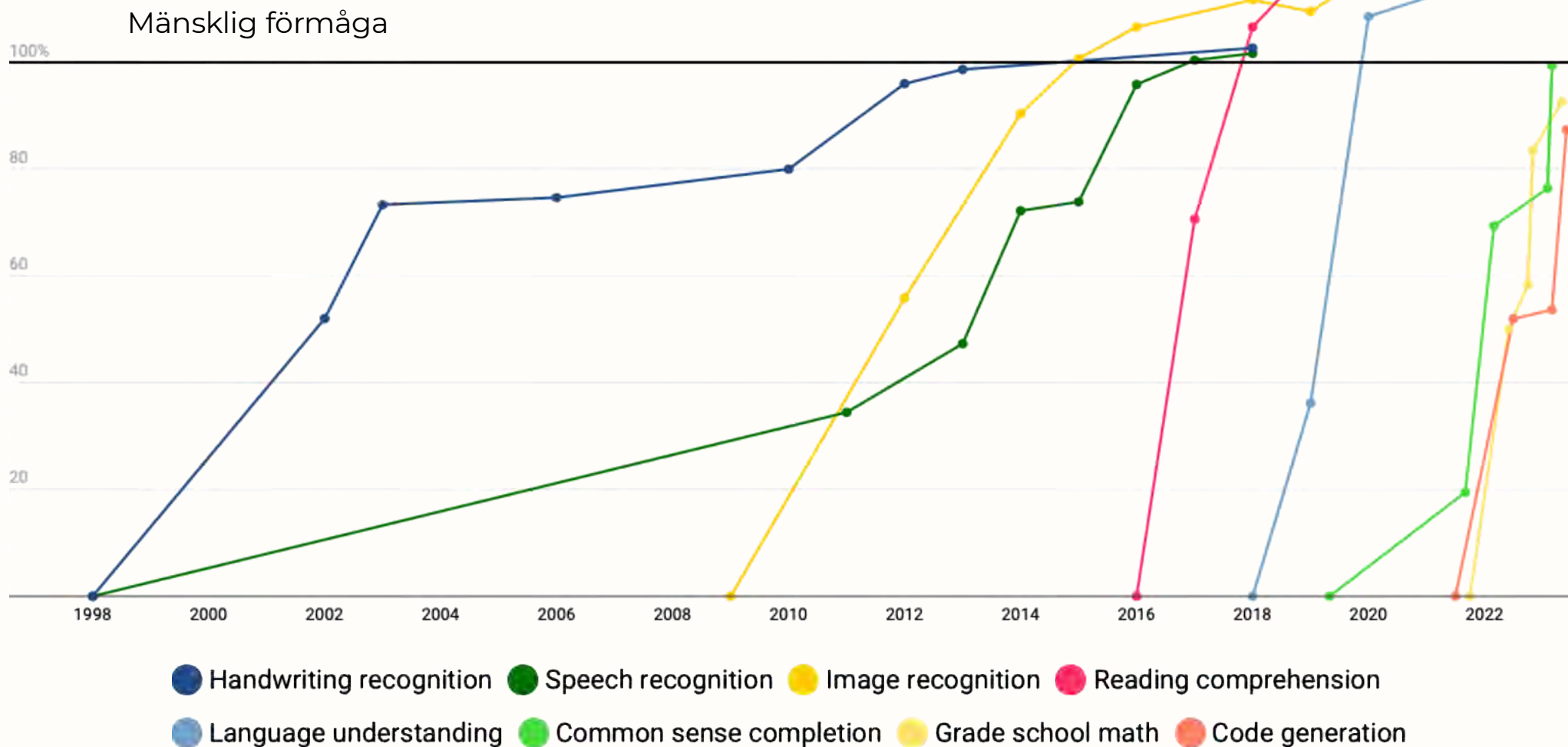
Utmaningen ligger i att förstå hur AI/ML kan skapa nytta och sedan införa det i den existerande organisationen

# AI är inte ett verktyg



\* Men du kan bygga fantastiska verktyg med AI

# AI utvecklar nya förmågor hela tiden



# Förstår vi hastigheten?

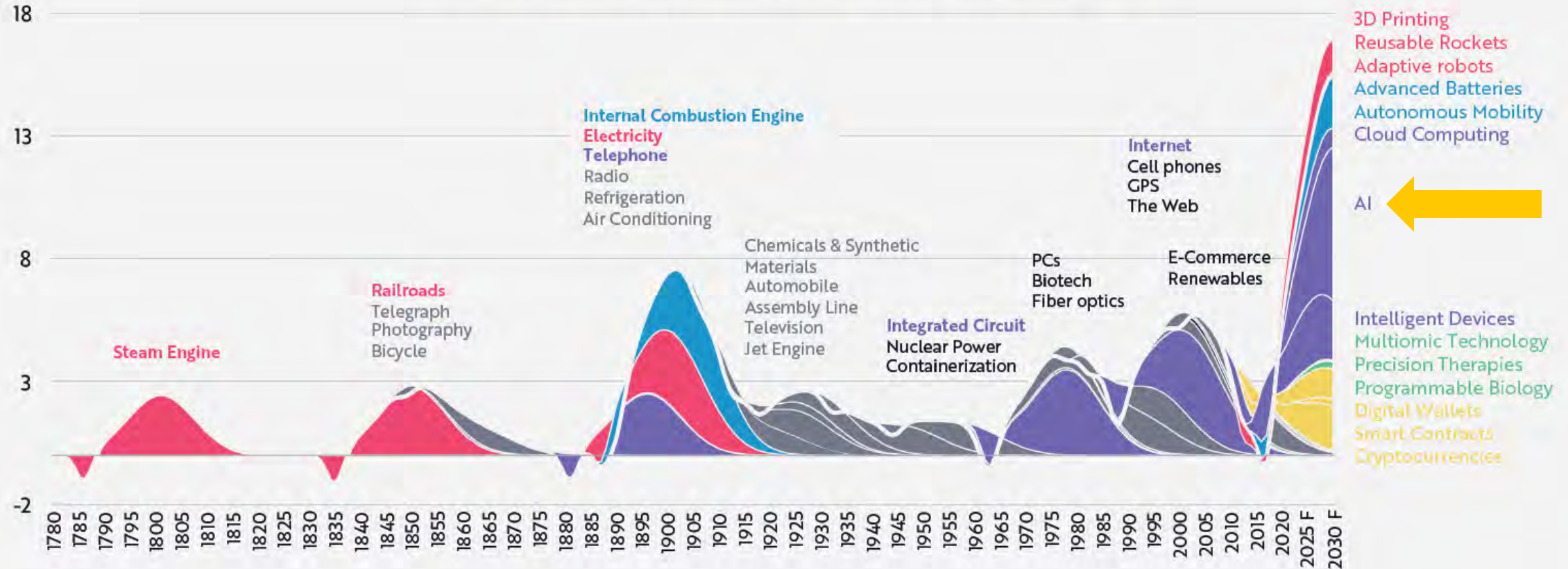


Bild: Amer Mohammed

# Converging Technologies Are Generating A Historic Technological Wave

## Estimated Economic Impact of General Purpose Technologies

(Annual Percentage Point Additions to Real GDP Growth And Consumer Surplus)



Sources: ARK Investment Management LLC, 2024. This ARK analysis is based on a range of underlying sources, including Bekar et al. 2017, which may be provided upon request. The chart uses GPT 4 prompting to survey a comprehensive list of general purpose technologies using the identification framework detailed therein. Where available, academic literature is also used to assess attributable economic impact. A GPT-4 scoring rubric assesses technology-by-technology impacts. The impact measured directly is matched against the scoring to tune all scores to produce technology-by-technology estimates of economic impact (even when direct measures of economic impact are unattainable). Consistent with General Purpose Technology theory, these technologies are assumed to go through a period of investment in which economic impact is negative before productivity advances begin to realize into economic data. All technologies are assumed to have the same diffusion and realization cycle. If recent technologies are assumed to diffuse more quickly, the current wave would appear steeper. Forecasts are inherently limited and cannot be relied upon. For informational purposes only and should not be considered investment advice or a recommendation to buy, sell, or hold any particular security. Past performance is not indicative of future results.



“

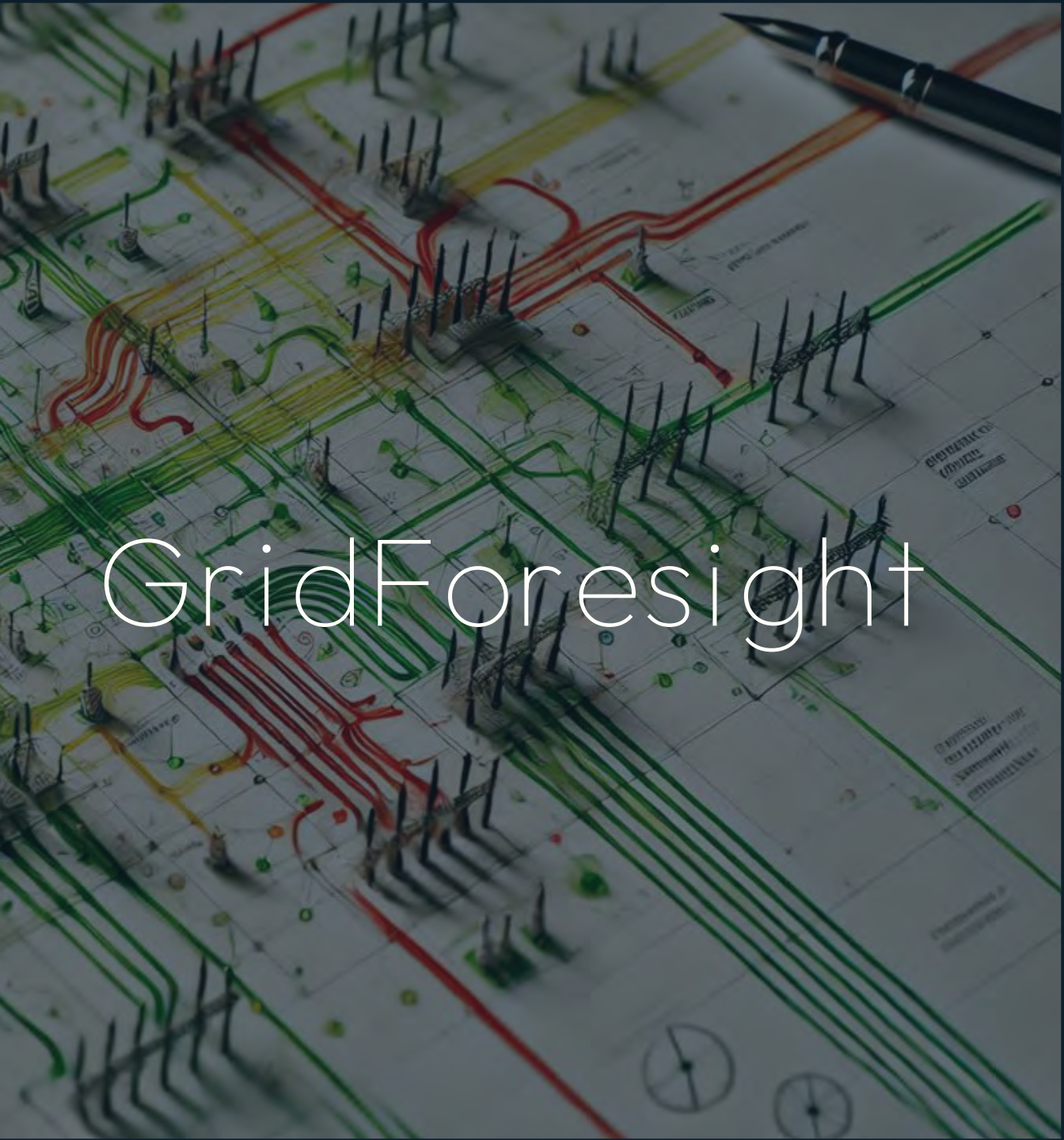
Det mesta är ännu ogjort,  
underbara framtid!

– Ingvar Kamprad

# AI Sweden – Energy Projekt portfolio



AI  
S W F D E N



# GridForesight



**AI**  
SWEDEN

FedML för att  
skapa  
dynamiska  
typlastprofiler



Varför nu?

# Varför är vi här idag?

Cirka 40% av energin som förbrukas i EU används i byggnader

Över 1/3 av EU:s energirelaterade växthusgasutsläpp (GHG) kommer från byggnader

IEA Energy Report 2024 ”AI in buildings can save more than 300TWh in global electricity demand by 2035”

# Pågående initiativ i branschen

- Energiprediktion och optimering
- Användningsanalys och fastighetsoptimering
- Grundläggande datahantering
- Utveckling och samverkan



# Gemensamma utmaningar för uppskalning

- Brist på datakvalitet och standardisering
- Organisatoriska hinder
- Affärsmodeller och lönsamhet
- Kravlösa nätverk



# Vägen framåt: Hur skapar vi värde?

- Utveckla gemensamma datastandarder
- Driva horisontella projekt
- Brygga nya kompetenser
- Skapa affärsmodeller med delat värde



# Don't miss a beat

Subscribe to our monthly  
newsletter to get the latest.

Join the list



[ai.se/newsletter](https://ai.se/newsletter)

Thank you!

Further  
questions:



ai.se



my.ai.se



ai.se/newsletter



youtube.com/c/aisweden



linkedin.com/company/aisweden



Anna Svensson



anna.svensson@ai.se